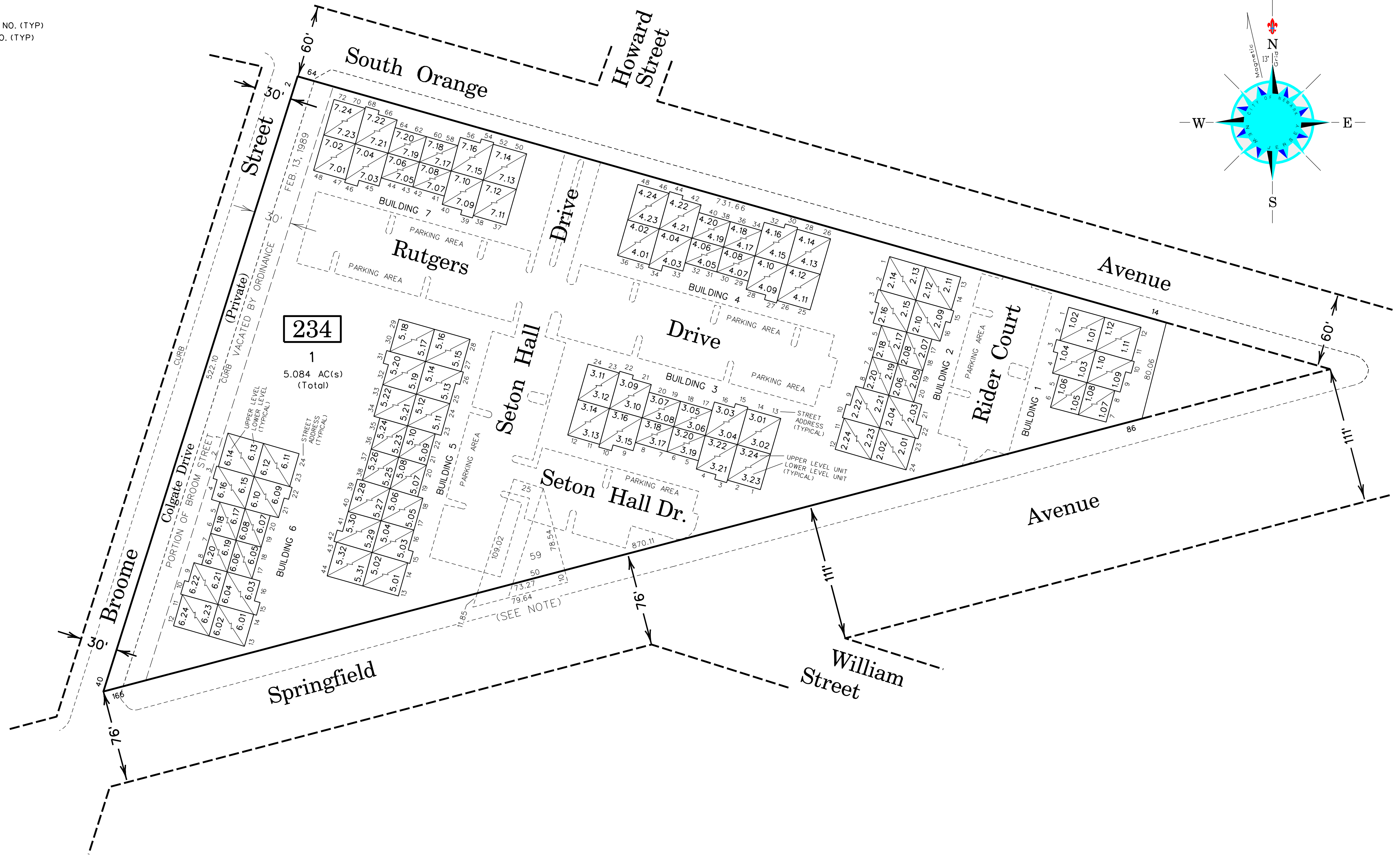


UNIT & MODEL LAYOUT
SCALE: 1" = 50'



27 LOWER LEVEL 783 SQ.F.T.	27 UPPER LEVEL 783 SQ.F.T.	27 LOWER LEVEL 783 SQ.F.T.	27 UPPER LEVEL 783 SQ.F.T.	27 LOWER LEVEL 729 SQ.F.T.	27 UPPER LEVEL 729 SQ.F.T.	27 LOWER LEVEL 729 SQ.F.T.	27 UPPER LEVEL 729 SQ.F.T.	25 LOWER LEVEL 675 SQ.F.T.	25 UPPER LEVEL 675 SQ.F.T.	23 LOWER LEVEL 594 SQ.F.T.	23 UPPER LEVEL 594 SQ.F.T.	20 LOWER LEVEL 540 SQ.F.T.	20 UPPER LEVEL 540 SQ.F.T.	20 LOWER LEVEL 540 SQ.F.T.	20 UPPER LEVEL 540 SQ.F.T.
1500 - LOWER UNIT TWO-STORY CONDOMINIUM TOTAL - 1566 SQ.F.T.		1500 - UPPER UNIT TWO-STORY CONDOMINIUM TOTAL - 1566 SQ.F.T.		1400 - LOWER UNIT TWO-STORY CONDOMINIUM TOTAL - 1458 SQ.F.T.		1400 - UPPER UNIT TWO-STORY CONDOMINIUM TOTAL - 1458 SQ.F.T.		1150 - LOWER UNIT TWO-STORY CONDOMINIUM TOTAL - 1350 SQ.F.T.		1150 - UPPER UNIT TWO-STORY CONDOMINIUM TOTAL - 1188 SQ.F.T.		1050 - LOWER UNIT TWO-STORY CONDOMINIUM TOTAL - 1080 SQ.F.T.		1050 - UPPER UNIT TWO-STORY CONDOMINIUM TOTAL - 1080 SQ.F.T.	

UNIT MODELS
SCALE: 1" = 25'

**SOCIETY HILL BLOCK 234, LOT 1
AT UNIVERSITY HEIGHTS CONDOMINIUM II**

NOTE:
RE: LOT 1 AND LOT 59 IN BLOCK 234
THERE IS AN AREA OF UNCERTAIN TITLE WITHIN CONSOLIDATED LOT 1 ALONG THE
RE-ALIGNED NORTHERLY RIGHT OF WAY LINE OF SPRINGFIELD AVENUE AT FORMER LOT 59
AND INCLUDES A 25-FOOT WIDE PORTION OF HOWARD STREET (VACATED). THE OVERLAPPING
LINES AND DIMENSIONS ARE SHOWN FOR INFORMATION ONLY AND ARE PLOTTED IN ACCORDANCE
WITH A PROPOSED SUBDIVISION MAP OF BLOCK 234 AND VARIOUS METES & BOUNDS DESCRIPTIONS
PREPARED IN 1989 AND DO NOT PURPORT TO REPRESENT ACTUAL TITLE OR OWNERSHIP STATUS IN
ANY MANNER. THESE SITUATIONS ARE SUBJECT TO RESOLUTION BY THE PROPERTY OWNERS CONCERNED.

THIS DETAIL SHEET HAS BEEN DRAWN USING COMPUTER AIDED
DRAFTING/DESIGN (CAD/D) AND COORDINATE GEOMETRY (COGO).
THE CONDOMINIUM DETAILS SHOWN HEREON ARE BASED ON
INFORMATION CONTAINED WITHIN THE MASTER DEED AND ON
AVAILABLE MAPS, DIAGRAMS AND FLOOR PLANS ON FILE IN THE
CITY OF NEWARK, TAX ASSESSOR'S OFFICE.

TAX MAP
CITY OF NEWARK
ESSEX COUNTY, NEW JERSEY
SCALE : 1" = 50' JANUARY 1, 2010
JOSEPH F. FOX, JR., P.L.S.
920 BROAD STREET NEWARK, N.J. 07102